

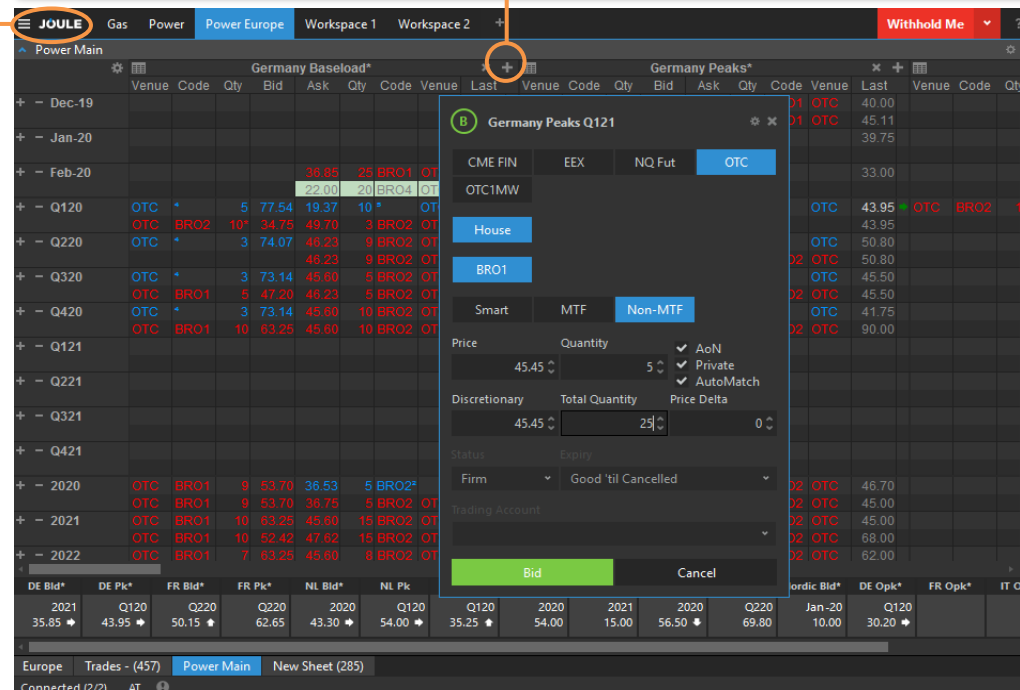
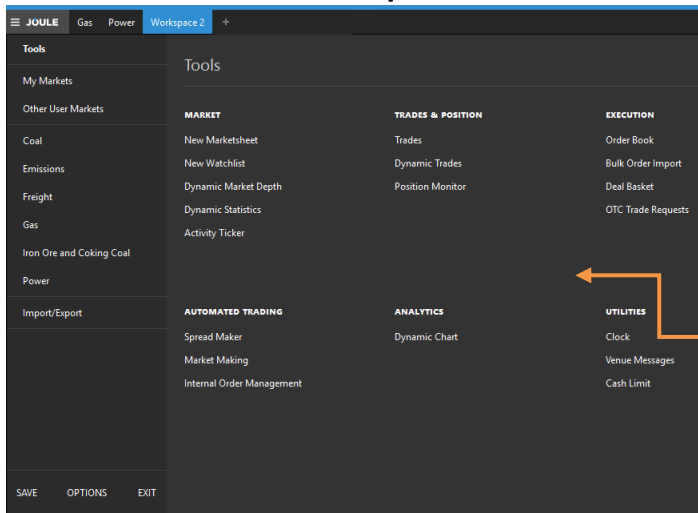
## Joule® Set-Up

### Getting Started

You will be sent a link to install Joule; click the link to start the installation process. Admin permissions are not required, but Joule requires Windows 7 or later and .NET version 4.6.1 or later installed on your PC.

### Adding and Removing Products

To add a product, click the **+** next to the product name, type the name of the new product and press **Enter**. To rearrange products, click and drag the product header and drop on another column header to reposition.

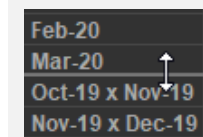


### Market View

Joule displays live market information in marketsheets. By default, products are shown across the top of the sheet and delivery periods are shown vertically on the left side.

### Expand Delivery Periods

To extend or reduce the number of deliveries on screen, click and drag up or down from the grey bar between delivery types.



### Creating a New Sheet

Select **Joule > New Marketsheet** to open a new sheet in a floating window. You can then quickly add your required products to the sheet using the search option. Once you have added products to your sheet, you can then select from a list of available periods.

### Access Markets

Select **Joule > My Markets** or **Other User Markets** to access pre-created marketsheets.

### Change Your Password

Your Joule password can be changed in **Joule > Options > Connection**. In order to change your password, you must know your existing Joule password.

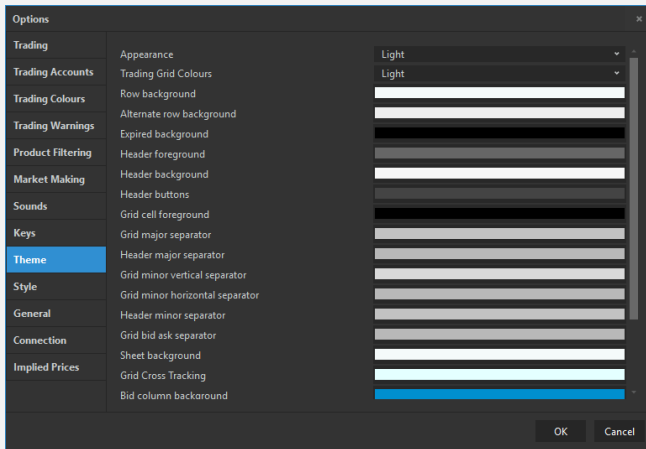
### Marketsheet Controls

- Use the cog icon to access the edit window, change the spread sorting mode, or change to jump grid mode.
- The column selector allows you to add or remove statistics to the grid.
- Market depth is unlimited: click **+** or **-** to adjust to the depth required.

## Joule® Configuration

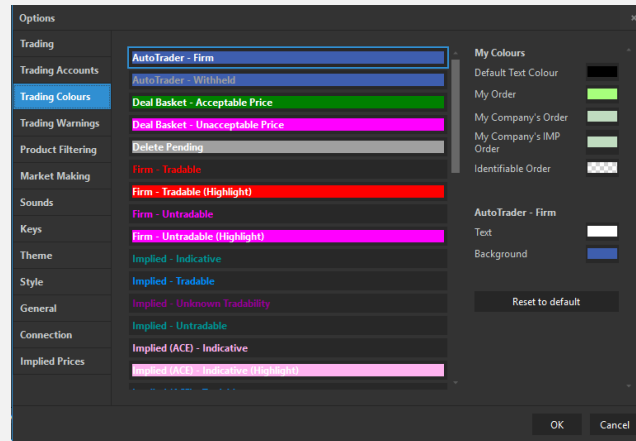
### THEMES

Select **Joule > Options > Theme** to select your preferred display theme. The screens on this page show the Dark theme:



### TRADING COLOURS

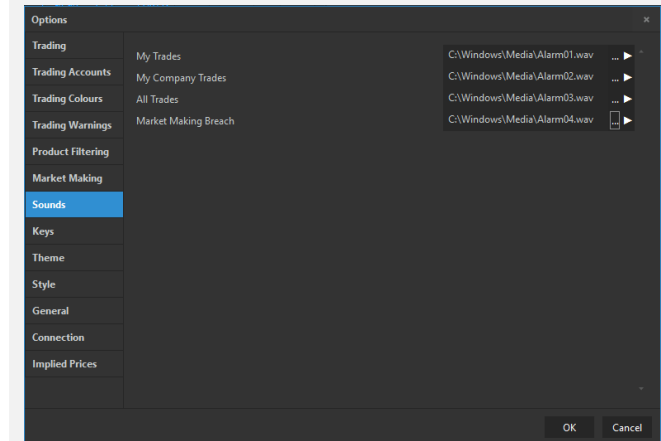
Trading colours can be customized. Select **Joule > Options > Trading Colours**. The screen below shows the default colours:



### SOUNDS

You can set sounds for *My Trades*, *My Company Trades*, *All Trades* and *Market Making Breach*.

To set these, select **Joule > Options > Sounds**.



## KEYBOARD SHORTCUTS

#### On Own Order

Enter: Update the Order  
Delete: Delete Order  
Ctrl+F: Firm  
Ctrl+W: Withhold

#### On Own Order

Space: Open Order Details  
Ctrl+Page Up: Increase Price  
Ctrl+Page Down: Decrease Price

#### On Other Orders

Enter: Deal the Order  
Insert or +: Insert a new Order

Any trading activity is conducted with the specific trading venue. Trayport is a software provider of trading solutions and not a trading venue. Trayport does not arrange investments or provide investment advice.

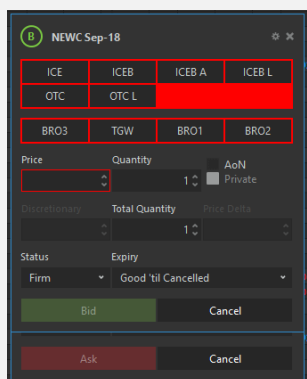
Offices located in London – EMEA and Americas (+44 (0) 20 7960 5500) and Singapore – Asia Pacific (+65 65213108)  
Trayport Limited is registered in England and Wales (Registered No. 02769279) 7th Floor, 9 Appold Street London EC2A 2AP

## Joule® Order Entry and Analysis

### ORDER ENTRY

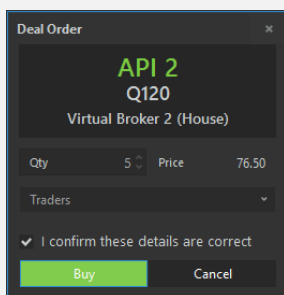
#### Order Entry

Press **Enter** on an empty price or quantity cell, or right-click on any cell and select **Add Order** to open the *Order Entry* dialog box.



#### Trade Price

Press **Enter** on a tradable order to open the *Deal Order* dialog box. You can adjust the quantity you wish to trade before confirming.



### TRADE HISTORY SEARCH

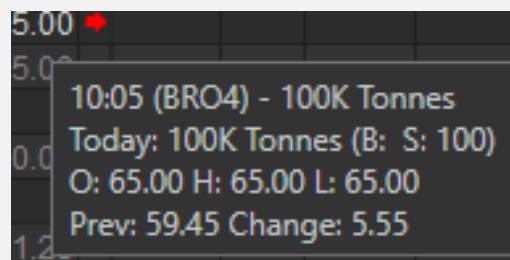
Quickly filter deals by entering intelligent search terms such as:

- Commodity
- Products
- Region
- Trade ID
- Traders
- Counterparty.

### STATISTICS

Hover your mouse pointer over the last traded price to see today's market statistics for the contract.

A grey last traded price indicates the trade was not today. All statistics can be added directly to the trade grid.



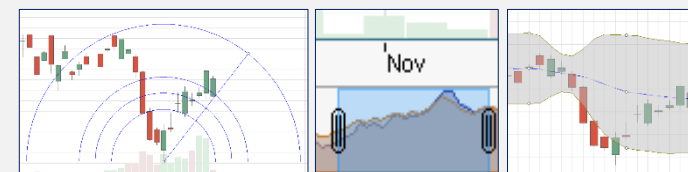
### POSITION MONITOR

Open the Position Monitor from the *View* menu to see today's net position for any trader in your company, including the aggregated VWAP bought and sold per contract.

Contract	Bought	Bought Price	Sold	Sold Price	Net Volume	Last
France Baseload Q418			10	50.10	-10	50.10
Germany Baseload Q418			80	43.75	-80	40.00
Germany Baseload 2019			5	15.00	-5	15.00

### CHARTING

Allows you to visualise price and volume data and to identify trends and potential trading strategies. A wide range of options gives you control over what data is displayed and how it is shown. To view a chart of any contract, right click and select **Chart**, alternatively press **F4** on the keyboard. The easiest way to navigate around a chart is to right-click and drag within the chart area. The cursor changes into a closed hand while navigating in this way. The date and value axes can also be used to navigate, allowing you to focus on particular areas of interest, or present a wider view of the data



## Microsoft Excel Integration

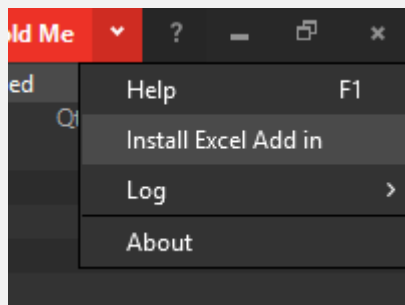
### JOULE EXCEL ADD-IN

	A	B	C	D	E	F
1	<b>Contract</b>	<b>Venue</b>	<b>Code</b>	<b>Qty</b>	<b>Bid</b>	<b>Ask</b>
2	Jan-20	OTC	BRO2	5	72.40	77.00
3	Feb-20	OTC	BRO2	5	72.25	74.60
4	Mar-20	OTC	BRO2	5		75.85
5						

Joule allows you to copy static market data to the clipboard, and paste it into another application; for example, Microsoft Excel.

You can copy all types of contract information (with the exception of the Quick Deal indicator and the Status column) as static or live data.

To enable live interaction with Microsoft Excel, download and install the appropriate add-in for your version of Joule and Excel from the web help on page Using Joule with Microsoft Excel.



### SPREAD MAKER

The Spread Maker component of the Watchlist allows you to carry out market making by setting up multiple orders simultaneously and placing them into the market with a single click.

Spread Maker orders can be benchmarked against other prices, and configured to work quantity into the market in a series of separate orders.

To open the Spread Maker, select **Joule > Spread Maker**.

### BULK ORDER IMPORT

The Bulk Order Import window allows you to quickly enter up to 500 orders into the market with one click. Orders can be copied into the window from Excel. To open the Bulk Order Import window, select **Joule > Import/Export**.

You can download an example spreadsheet from the Joule web help.

### MORE FEATURES

#### The Jump Grid

To manage multiple trading hubs and multiple commodities quickly and easily on one screen, use the *Jump Grid* view. On the trading grid, click on the cog icon, then select **Jump Grid** to switch the view mode.

The product box shows the last traded price, and the red background indicates the activity compared to other products. Hover over the product to see the last five trades.

#### Entering Automated Trading Orders

Order Entry for standard and automated orders are unified in the *Order Entry* dialog box.

To insert a Ghost order, set the visible quantity to 0 and enter the total quantity to ghost amount. For an Iceberg order, select the *Private* check box and enter a total quantity. To insert a Discretionary order, adjust the discretionary field.

#### Joule Mobile

The Joule Mobile app provides instant access to a read-only view of the market on your smartphone. Contact your Trayport Client Manager for details.

#### Help

Press **F1**, or **? > Help** to launch the latest Joule web help platform. Or, call Trayport Support on +44 (0) 207 960 5555.